

§ 10.1 # 9 a) sketch by plotting points

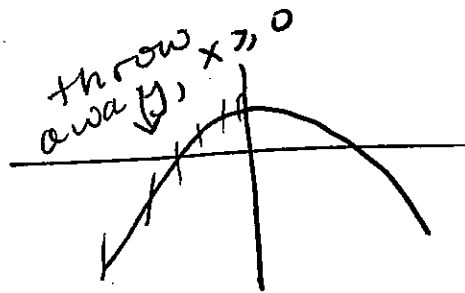
b) Eliminate the parameter.

$$x = \sqrt{t}, \quad y = 1 - t$$

$$x^2 = t, \quad y = 1 - t = 1 - x^2$$

$$y = 1 - x^2$$

$$y = -x^2 + 1$$



$t \geq 0$ so $x \geq 0$

